

# R454b Refrigerant

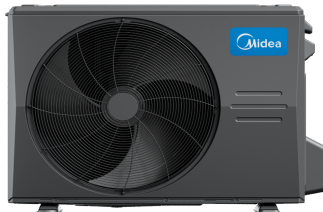
# SUBMITTAL DATA SHEET



Series Name: Xtreme Heat Pancake Series  
Model Number: MAPHE-H18B-2A/MO1HE-H18B-2A

## Air Handler Heat Pump System

Location:	Approval:
Engineer:	Date:
Submitted to:	Construction:
Submitted by:	Unit #:
Reference:	Drawing #:



## INDOOR SPECIFICATION

ESP(in.W.G)	0-0.8
Indoor Air Flow (Turbo/H/M/L/Si) (CFM)	600 / 565 / 530 / 489 / 489
Indoor Noise Level (Turbo/H/M/L/Si) (dBA)	55.5 / 55.5 / 52.5 / 50.5 / 50.5
Dimension (WxDxH)	inch 43-1/4 x 23-3/8 x 10-7/8
	mm 1098 x 593 x 278
Package (WxDxH)	inch 47-1/4 x 26-3/4 x 13-5/8
	mm 1200 x 680 x 345
Net/Gross Weight	lbs 118/127.87
	kg 53.5/58

## OUTDOOR SPECIFICATION

Compressor Type	ROTARY
Compressor Model	KTM240D46UKT2
Refrigerant	R454B
Refrigerant Oil Charge(mL)	620
Refrigerant Oil	VG74
Outdoor Air Flow (Max) (CFM)	1,766
Outdoor Noise Level (dBA)	59
Dimension (WxDxH)	inch 35 x 13-1/2 x 26-1/2
	mm 890 x 342 x 673
Package (WxDxH)	inch 39-1/8 x 15-5/8 x 29-1/8
	mm 995 x 398 x 740
Net/Gross Weight	lbs 101 / 109
	kg 46 / 49.5

## EFFICIENCY

Cooling		Heating	
SEER2	16.8	HSPF2-4	10.5
EER2	12	COP	3.5

## PERFORMANCE of Cooling

Cooling (Btu/hr)	
Rated Capacity	18,000
Min/Max Capacity	6,000~20,000
Moisture Removal(L/h)	1.46
Standard Operating Range(*F/*C)	-22~122(-30 ~ 50)
Rated Cooling Conditions:	Indoor: 80°F DB/67°F WB Outdoor: 95°F DB/75°F WB

## PERFORMANCE of Heating

Heating (Btu/hr)	
1. @ 47°F Rated	19,000
1. @ 47°F Min/Max Capacity	6,600~22,800
2. @ 17°F Rated	15,000
3. @ 5°F Rated: Capacity / COP	19,000/1.8
3. @ 5°F Max: Capacity	19,000
Standard Operating Range(*F/*C)	-22~75(-30 ~ 24)
1. Rated Heating Conditions:	Indoor: 70°F DB/60°F WB Outdoor: 47°F DB/43°F WB
2. Rated Heating Conditions:	Indoor: 70°F DB/60°F WB Outdoor: 17°F DB/15°F WB
3. Heating Conditions, Compressor Operating at Max. Frequency	Indoor: 70°F DB/60°F WB Outdoor: 5°F DB/5°F WB

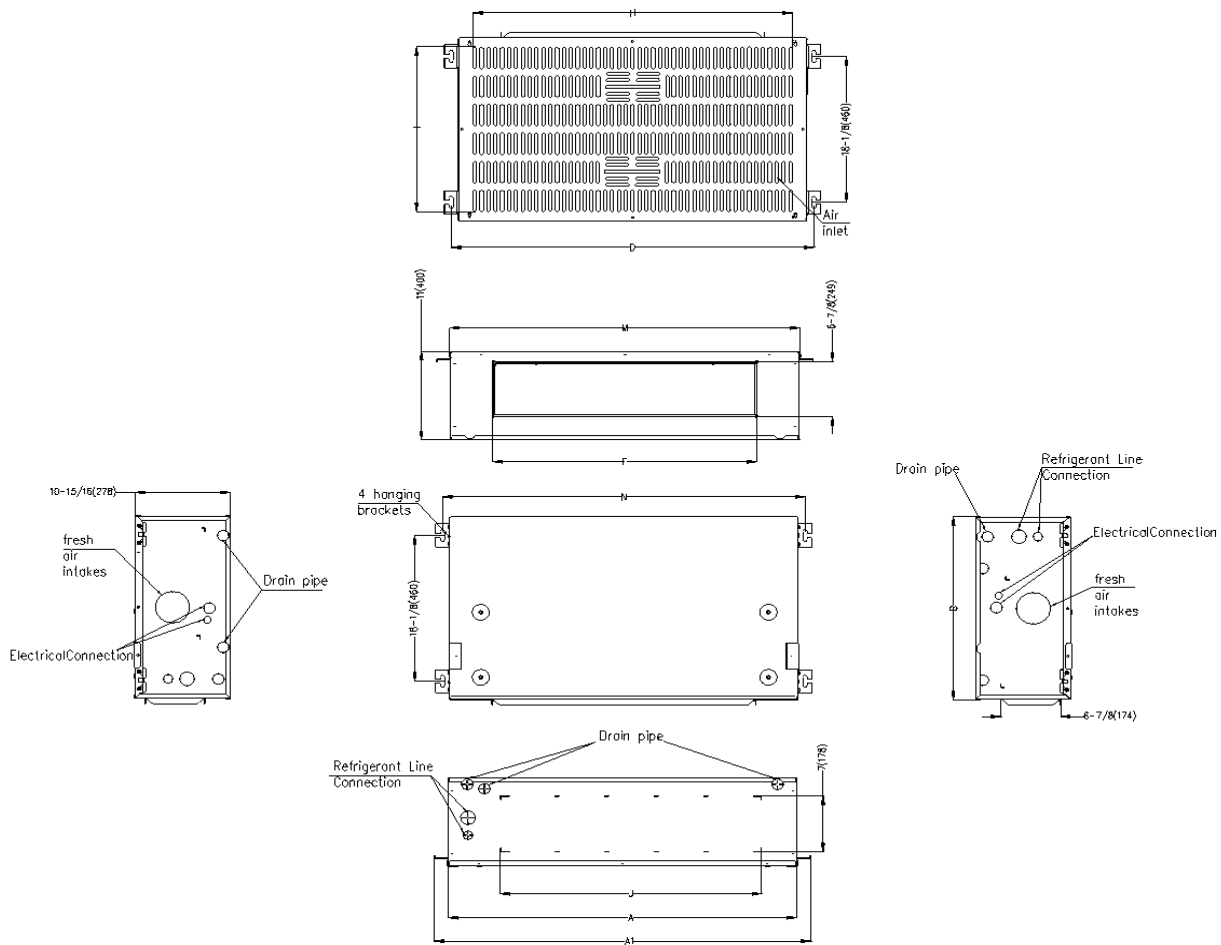
## ELECTRICAL

Indoor Power Supply	115/208/230,60Hz,1Ph
Indoor MCA 115V/(208/230V)	115V:6,208/230V:5
Indoor MOP	15.0
Outdoor Power Supply	208/230,60Hz,1Ph
Outdoor MCA	16.0
Outdoor MOP	20.0
Communication Wiring	AWG 20/2
Compressor RLA	10.5
Outdoor Fan Motor RLA	0.9
Outdoor Fan Motor W	80
Indoor Fan Motor RLA	115V:4;208/230V:3.5
Indoor Fan Motor W	250
System Power Input @ Cooling (W)	2,000(600 ~ 2,000)
System Power Input @ Heating (W)	1,590(500 ~ 1,950)
MCA: Min. circuit amps (A)	MOCP: Max. over current protection (A)
RLA: Rated load amps (A)	W: Fan motor rated output (W)

## PIPING

Throttle type(Indoor)	EXV
Throttle type(Outdoor)	EXV
Liquid Size	3/8" (9.52mm)
Gas Size	3/4" (19mm)
Max. Piping Length(ft/m)	98(30)
Max. Height Difference(ft/m)	66(20)
Max. Pre-charged Length(ft/m)	25(7.5)
Refrigerant Pre-charged Amount(oz/kg)	74(2.1)
Additional Charge of Refrigerant((oz/ft)/(g/m)	0.7(65)
Connection Method	Flared

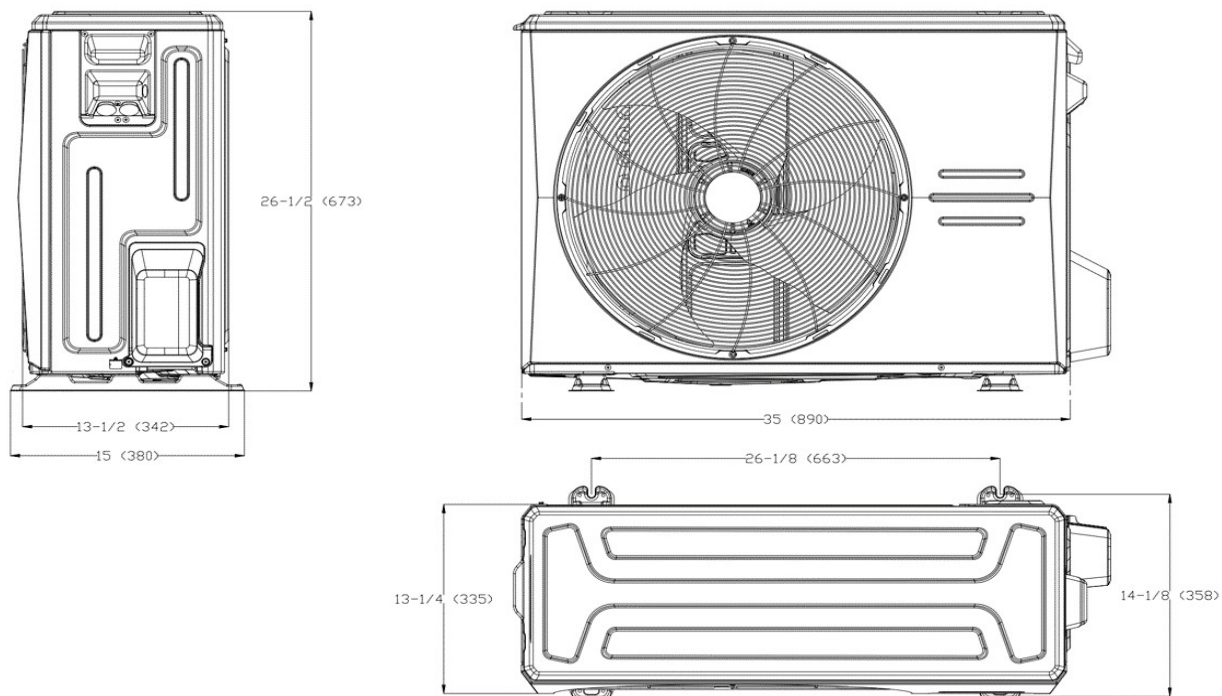
# Indoor Unit Dimension



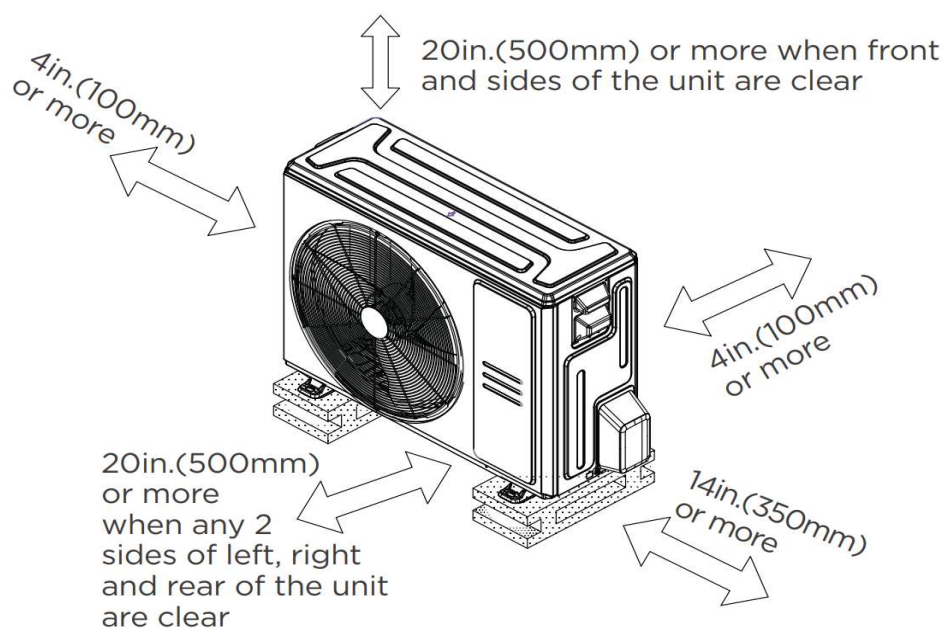
	18K		24K		30K		36K	
	inch	mm	inch	mm	inch	mm	inch	mm
A	39-15/16	1015	45-7/8	1165	51-15/16	1320	58-7/8	1495
A1	43-1/4	1098	49-1/8	1248	55-1/4	1403	62-1/8	1578
J	30	761	35-7/8	911	41-15/16	1066	48-7/8	1241
D	41-5/8	1057	47-1/2	1207	53-5/8	1362	60-1/2	1537
F	30-1/4	769	36-3/16	919	42-5/16	1074	49-3/16	1249
H	36-5/8	930	39-3/4	1010	47-5/8	1210	53-15/16	1370
M	40-3/16	1020	46-1/16	1170	52-3/16	1325	59-1/16	1500
N	41-5/8	1057	40-7/16	1027	53-5/8	1362	60 1/2	1537

## Outdoor Unit Dimension

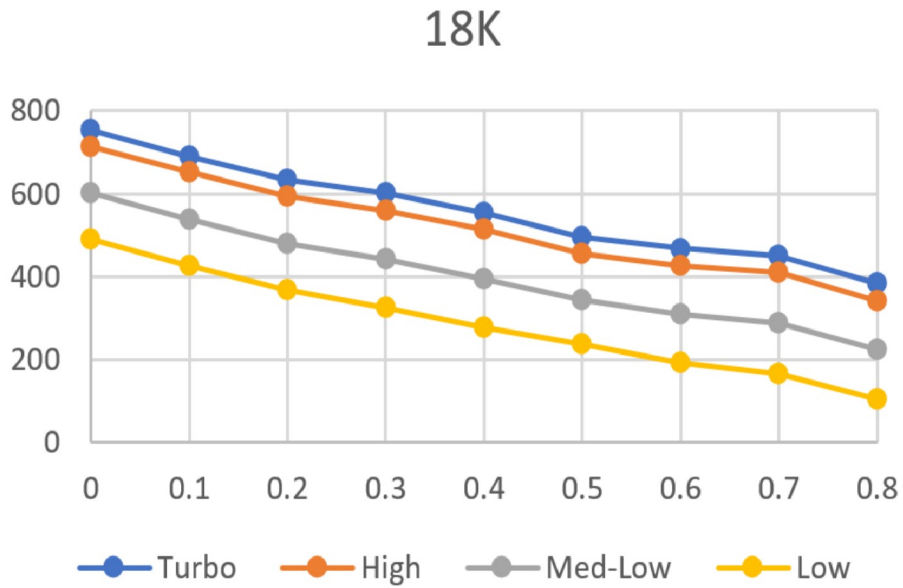
Unit:inch(mm)



## Installation Instruction For Outdoor Unit



## Fan Performance For Indoor Unit



## Features

- Downward or backward (optional) air inlet
- Aluminum Coil
- The IDU supports 115/230V voltage compatibility
- Constant Air Flow system: Up to 0.80 In.W.C.
- Optional Auxiliary heat kit up to 10kW
- Easy Maintenance
- Multiple control options available:
  - Two-way communication wired controller with built-in Wi-Fi: 120N (X6W)
  - Wireless remote controller
  - Third-Party 24V Thermostat
- Adaptive control systems with 24V and RS485 communication
- High efficiency up to 17.5 SEER2, 12 EER2, 10.5 HSPF2
- Base pan heater and crankcase heater are equipped as standard